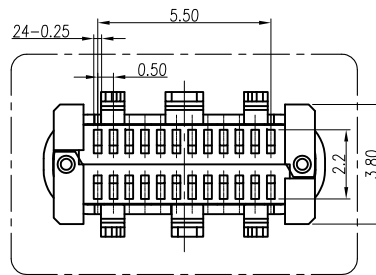
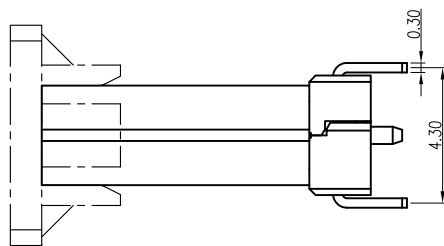
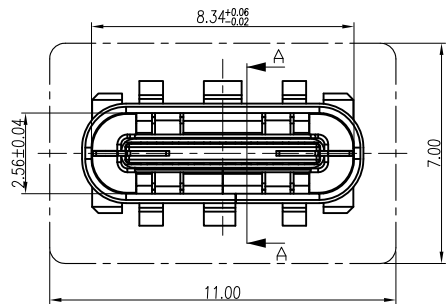
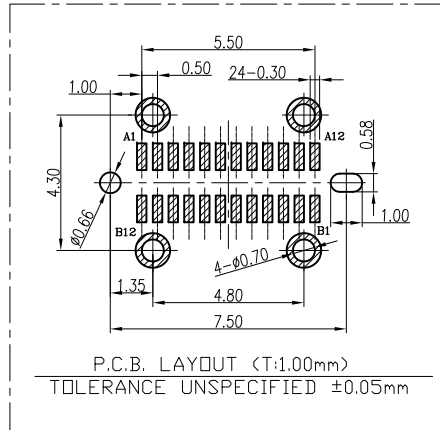
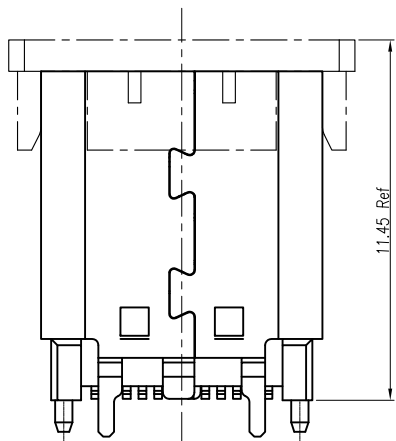


NOTE:  
 1.ELECTRICAL CHARACTERISTICS;  
 1.1 CONTACT RESISTANCE: 40mΩ Max FOR INITIAL. 50mΩ CHANGE AFTER TEST. MEASURE AT 20mV, 100mA.  
 1.2 CONTACT CURRENT RATING: 3A Max.  
 1.3 DIELECTRIC WITHSTANDING VOLTAGE: 100V AC R.M.S.  
 1.4 INSULATION RESISTANCE 100MΩ Min  
 1.5 OPERATING TEMPERATURE: -40°C ° 85°C  
 2.MECHANICAL CHARACTERISTICS:  
 2.1 MATING FORCE: 5~20N  
 2.2 UNMATED FORCE: 8~20N  
 2.3 DURABILITY: 10,000 CYCLES



A1	GND	B12	GND
A2	SSTXP1	B11	SSRXP1
A3	SSTXN1	B10	SSRXN1
A4	VBUS	B9	VBUS
A5	CC1	B8	SBU2
A6	DP1	B7	DN2
A7	DN1	B6	DP2
A8	SBU1	B5	CC2
A9	VBUS	B4	VBUS
A10	SSRXN2	B3	SSTXN2
A11	SSRXP2	B2	SSTXP2
A12	GND	B1	GND
PIN	SIGNAL NAME	PIN	SIGNAL NAME



5	Shell	1	SUS	T=0.30mm	Nickel Plated
4	Gnd plates	1	SUS	T=0.12mm	NO Plated
3	Mid plates	1	SUS	T=0.15mm	Nickel Plated
2	Contact	24	COPPER ALLOY	T=0.15mm	Contact area: 0.8~30u" Gold Flash Solder area: 80u"min. matte Tin Plated over Nickel
1	Housing	2	THERMOPLASTIC	UL 94-V0	Black
No.	Name	Q'ty	Material	Remarks & Thickness	Finish

PRAT NO:		MATERIAL:			
MODEL NO:		FINSH:			
UNIT: mm	SAZE: A4	COLOR:		PART NAME:	
TOLERANCE UNSPECIFIED		DR: 趙承寶 '17/05/13		USB3.1-C TYPE(F) 180° SMT(H10.5)	
.X ±0.30	.XX ±0.20	CHK: 趙承寶 '17/05/13		DWG NO: S/A-759	REV. A0
.XXX ±0.10	ANG ±1°	APP: Kent '17/05/13		SCALE: 1:1	SHEET: 1 of 1

ROHS Compliant