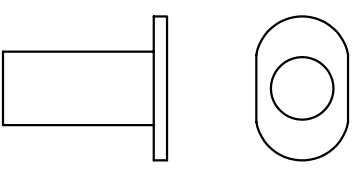
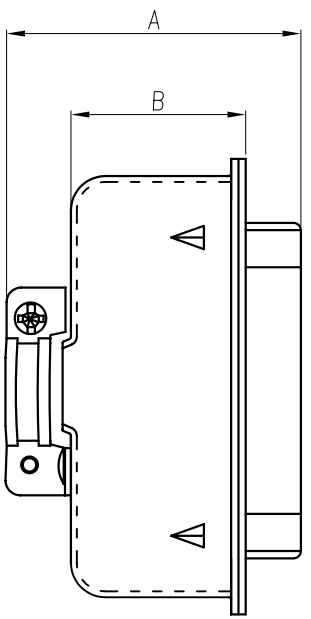
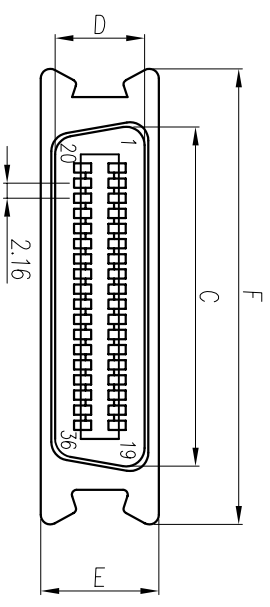


REV.	ECN NO	LOCATIONS	DESCRIPTION	DATE	REVISER	APPD



Note:

1.Material:

- 1.1 Insulator: P.B.T UL 94-V0 rated.
- 1.2 Contact: Brass,t=0.20mm.
- 1.3 Front shell: Cold rolled steel,t=0.45mm,0.50mm,0.60mm;
- 1.4 Back shell: Cold rolled steel,t=0.40mm.

2.Specification:

- 2.1 Current rating: 1 A Max.
- 2.2 Dielectric withstanding voltage: 500 V(ac) for 1 minute.
- 2.3 Contact resistance: 30 mΩ Max.
- 2.4 Insulation resistance: 1000 MΩ Min at DC 500V.
- 2.5 Temperature range: -55°C~+105°C

3.Finishes:

- 3.1 contacts:Gold flashed 1u",3u",5u",10U",15u",30u".
- 3.2 Shell: Nickel,tin or gold plated

4	Back-shell	1	Cold Rolled Steel	T=0.40mm	Tin Plated
3	Front-shell	1	Cold Rolled Steel	T=0.45mm,0.50mm,0.60mm	Nickel Plated
2	Contact	14*50	Brass	T=0.20mm	Gold Flashed
1	Housing	1	P.B.T	UL 94-V0	Black/Blue/White
No.	Part Name	Q'ty	Material	Remarks & Thickness	Finish

PART NO:	MATERIAL:		
MODEL NO:	FINSH:		
UNIT: mm	SIZEA4	COLOR:	PART NAME:
TOLERANCE UNSPECIFIED	DR: 段林麗 '06/03/06	CHK: Song '06/03/06	CENTRONIC SOLDER 36PIN(M)傳統裝配式
.x ±0.3	APP: Kent '06/03/06	DWG NO: S/A-184	REV: A0
.xx ±0.20	SCALE: 1:1	SHEET: 1 of 1	REV: A0
.xxx ±0.100			
ANG. ±1			

PART NO	A±0.20	B±0.20	C±0.20	D±0.20	E±0.20	F±0.20
CN-14P	41.40	21.20	25.60	12.25	15.20	38.80
CN-24P	41.40	21.20	36.47	12.25	15.20	49.30
CN-36P	40.50	22.60	49.35	12.25	15.20	62.00
CN-50P	45.50	24.80	64.47	12.25	15.20	77.40