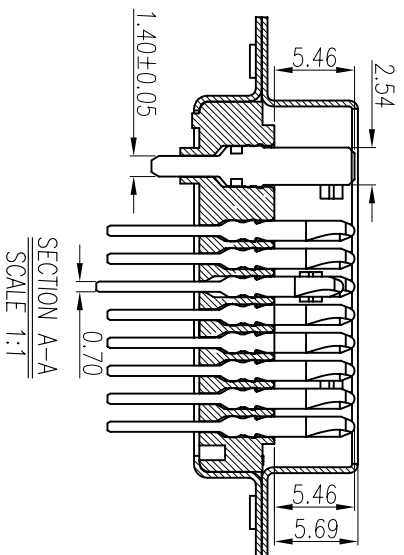
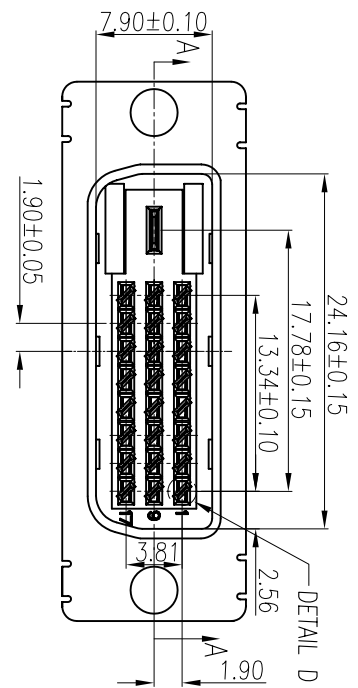
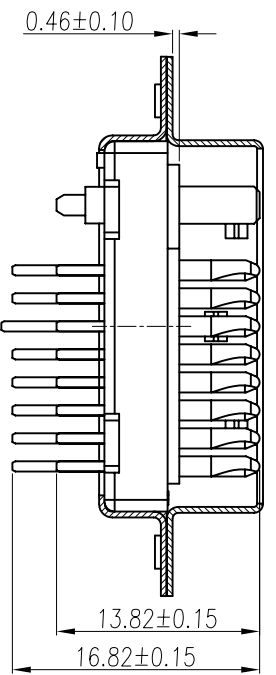


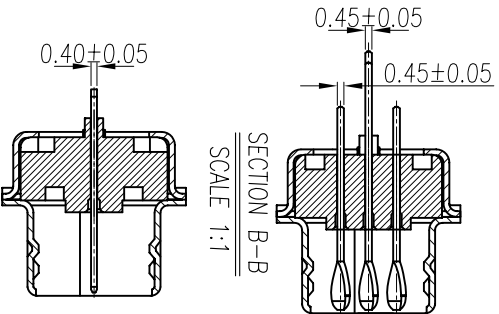
REV.	ECN NO	LOCATIONS	DESCRIPTION	DATE	REVISER	APPD



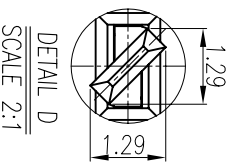
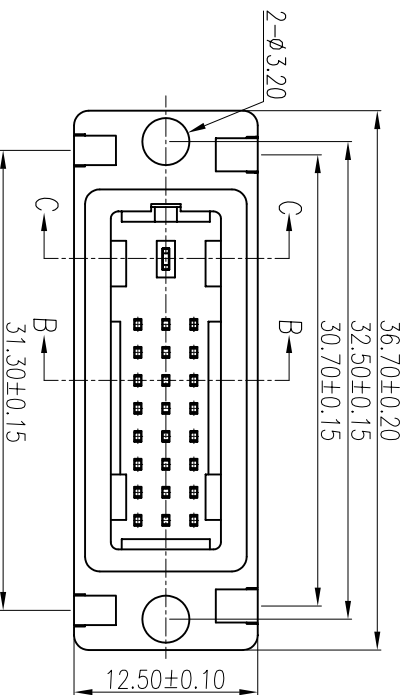
SECTION A-A
SCALE 1:1



SECTION B-B
SCALE 1:1



SECTION C-C
SCALE 1:1



DETAIL D
SCALE 2:1

- Note:
- Material:
 - Insulator: P.B.T UL 94-V0 rated.
 - Contact: Brass,t=0.45mm.
 - Contact: Brass,t=0.40mm.
 - Shell: Cold rolled steel,t=0.40mm.
 - Specification:
 - Current rating: 1 A Max.
 - Dielectric withstanding voltage: 500 V(ac) for 1 minute.
 - Contact resistance: 30 mΩ Max.
 - Insulation resistance: 1000 MΩ Min at DC 500V.
 - Mating force:3.0kg Max.
 - Unmating force:1.0kg Min.
 - Temperature range: -55°C~+105°C
 - Finishes:
 - contacts:Gold flashed 1u",3u",5u",10u",15u",30u".
 - Shell: Nickel,Tin Or Glod plated.

No.	Name	Q'ty	Material	Remarks & Thickness	Finish
5	Back-shell	1	Cold rolled steel	T=0.40mm	Tin Plated
4	Front-shell	1	Cold rolled steel	T=0.40mm	Nickel Plated
3	Contact	1	Brass	T=0.40mm	Gold Flashed
2	Contact	24	Brass	T=0.45mm	Gold Flashed
1	Housing	1	P.B.T	UL 94-V0	Black/Ivory

PART NO:		MATERIAL:			
MODEL NO:		FINSH:			
UNIT: mm	SIZE: A4	COLOR:		PART NAME: DVI 24+1(M)SOLDER	
TOLERANCE UNSPECIFIED		DR: 李霞 '06/05/11		DWG NO:	
x ±0.3	xx ±0.20	CHK: Kevin '06/05/11		SCALE: 1:1	
.xxx ±0.100	ANG. ±1°	APP: Kent '06/05/11		SHEET: 1 of 1	
REV: A1		REV: A1		REV: A1	