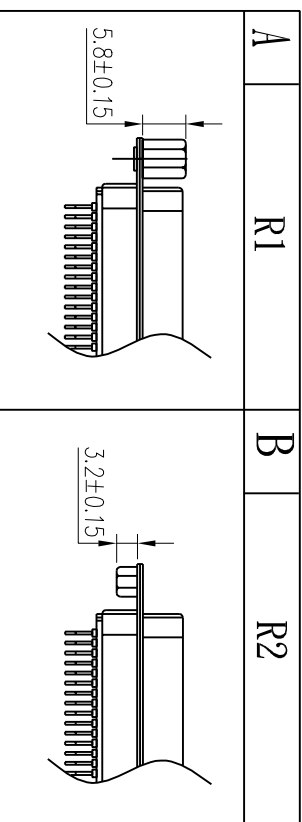
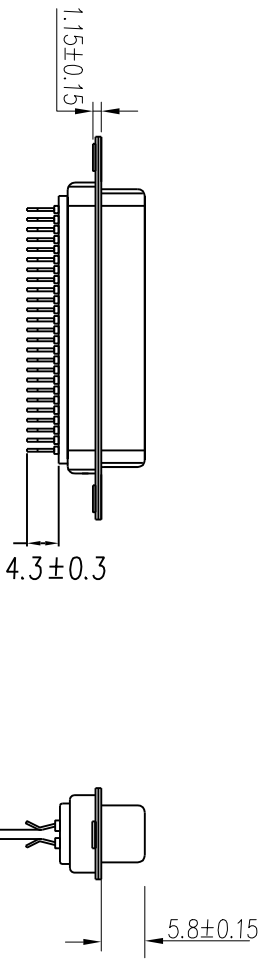
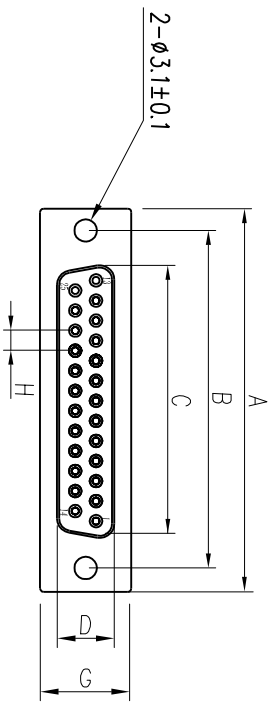


REV	ECN NO	LOCATIONS	DESCRIPTION	DATE	REVSER	APPD



PART NO	A ±0.25	B ±0.20	C ±0.20	D ±0.20	G ±0.25	H ±0.05
DS-09S	30.81	24.99	16.33	7.9	12.55	2.77
DS-15S	39.25	33.32	24.66	7.9	12.55	2.77
DS-25S	53.04	47.04	38.38	7.9	12.55	2.77
DS-37S	69.50	63.50	54.84	7.9	12.55	2.77

- Note:
- Material:
 - Insulator: P.B.T UL 94-V0 rated.
 - Contact: Copper alloy, t=0.20mm.
 - Shell: Cold rolled steel, t=0.40mm.

- Specification:
 - Current rating: 1 A Max.
 - Dielectric withstanding voltage: 500 V(ac) for 1 minute.
 - Contact resistance: 30 mΩ Max.
 - Insulation resistance: 1000 MΩ Min at DC 500V.
 - Total mating force: 8.0 Kgf Max.
 - Total unmating force: 1.5 Kgf Min.
 - Temperature range: -55°C~+105°C

- Finishes:
 - contacts: Gold flashed 1u", 3u", 5u", 10u", 15u", 30u".
 - Shell: Nickel, tin or gold plated

No.	Part Name	Qty	Material	Remarks & Thickness	Finish
4	Back-shell	1	Cold Rolled Steel	T=0.40mm	Tin Plated
3	Front-shell	1	Cold Rolled Steel	T=0.40mm	Nickel Plated
2	Contact	9-37	Copper alloy	T=0.20mm	Gold Plated
1	Housing	2	P.B.T	UL 94-V0	Black/Blue/White

PART NO:		MATERIAL:		PART NAME:	
MODEL NO:		FINSH:		D-SUB SOLDER (F)CP	
UNIT: mm	SIZE: A4	COLOR:			
TOLERANCE UNSPECIFIED					
.x	±0.3	DR: <i>Oyphus</i>	DWG NO:	HC-002	REV: A0
.xx	±0.20	CHK: <i>Nick</i>	APP: <i>Kend</i>	SCALE: 1:1	SHEET: 1 of 1
.xxx	±0.100	ANG. ±1°	DATE: 02/03/06		