

| REV. | ECN NO | LOCATIONS | DESHCRIPTION | DATE | REVSER | APPD |
|------|--------|-----------|--------------|------|--------|------|
|      |        |           |              |      |        |      |

Note:

1.Material:

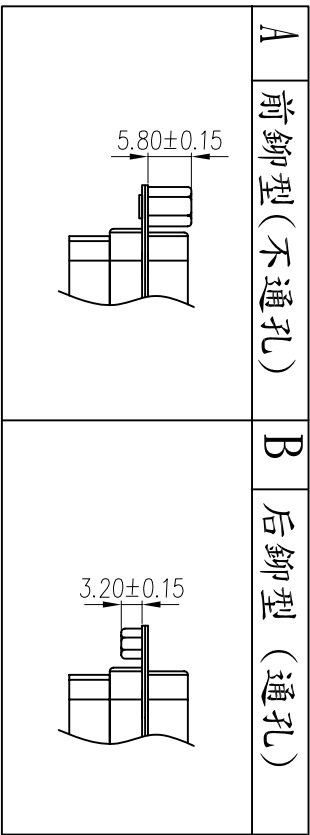
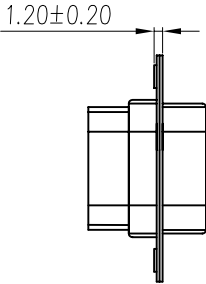
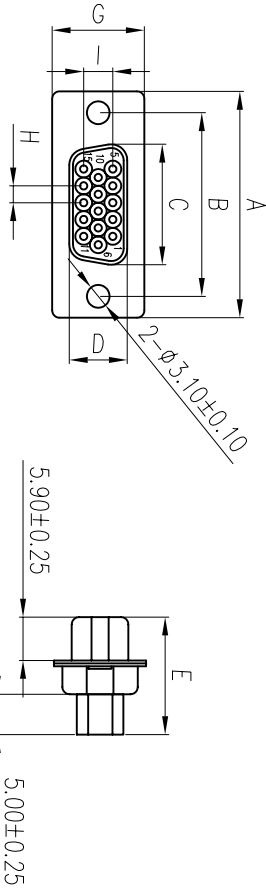
- 1.1 Insulator: P.B.T UL 94-V0 rated.
- 1.2 Contact: Brass,t=0.20mm.
- 1.3 Shell: Cold rolled steel,t=0.40mm.

2.Specification:

- 2.1 Current rating: 1 A Max.
- 2.2 Dielectric withstanding voltage: 500 V(ac) for 1 minute.
- 2.3 Contact resistance: 30 mΩ Max.
- 2.4 Insulation resistance: 1000 MΩ Min at DC 500V.
- 2.5 Total mating force: 4.0 Kgf Max.
- 2.6 Total unmating force: 1.5 Kgf Min.
- 2.7 Temperature range: -55°C~+105°C

3.Finishes:

- 3.1 contacts:Gold flashed 1u”,3u”,5u”,10U”,15u”,30u”.
- 3.2 Shell: Nickel,tin or Zinc plated



| PART NO | A±0.25 | B±0.25 | C±0.25 | D±0.25 | E±0.25 | G±0.25 | H±0.20 | I±0.20 |
|---------|--------|--------|--------|--------|--------|--------|--------|--------|
| HDC-15S | 30.80  | 25.00  | 16.33  | 7.90   | 16.00  | 12.60  | 2.29   | 3.96   |
| HDC-26S | 39.20  | 33.32  | 24.66  | 7.90   | 16.00  | 12.60  | 2.29   | 3.96   |
| HDC-44S | 53.05  | 47.04  | 38.38  | 7.90   | 16.00  | 12.60  | 2.29   | 3.96   |
| HDC-62S | 69.40  | 63.50  | 54.84  | 7.90   | 16.00  | 12.60  | 2.29   | 3.96   |

|                       |           |                              |                     |               |  |
|-----------------------|-----------|------------------------------|---------------------|---------------|--|
| PART NO:              | MATERIAL: | HSI-CHIN ELECTRONICS CO.,LTD |                     |               |  |
| MODEL NO:             | FINSH:    |                              |                     |               |  |
| UNIT: mm              | SIZE:A4   | COLOR:                       | PART NAME:          |               |  |
| TOLERANCE UNSPECIFIED |           | DR: 黃義強                      | D-SUB HDD HDCIMP(F) |               |  |
| .x                    | ±0.3      | CHK: Song                    | DWG NO:             | REV: A0       |  |
| .xx                   | ±0.20     |                              |                     |               |  |
| .xxx                  | ±0.100    | AP: Kent                     | SCALE: 1:1          | SHEET: 1 of 1 |  |
| ANG.                  | ±1°       | 06/04/05                     |                     |               |  |