

REV.	ECN NO	LOCATIONS	DESCRIPTION	DATE	REVISER	APPD

Note:

1.Material:

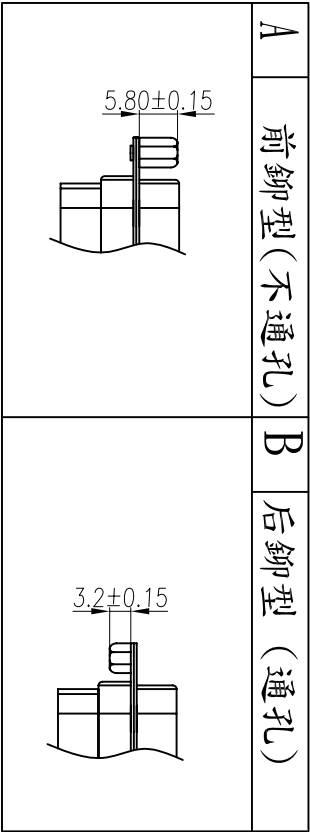
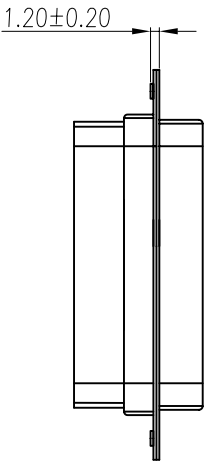
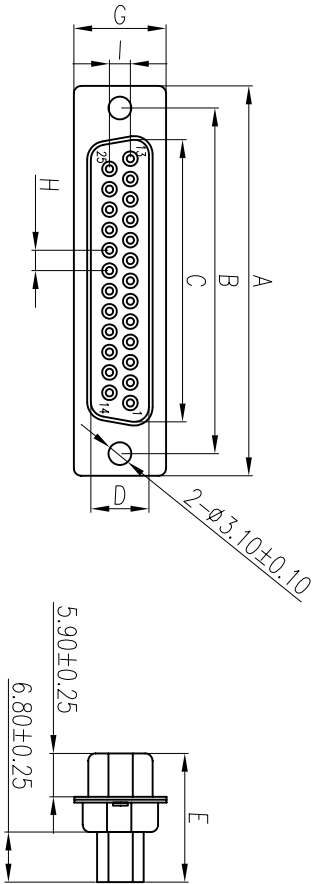
- 1.1 Front Insulator: P.B.T UL 94-V0 rated.
- 1.2 Back Insulator: PA66 UL 94-V0 rated.
- 1.3 Contact: Brass,t=0.20mm.
- 1.4 Shell: Cold rolled steel,t=0.40mm.

2.Specification:

- 2.1 Current rating: 1 A Max.
- 2.2 Dielectric withstanding voltage: 500 V(ac) for 1 minute.
- 2.3 Contact resistance: 30 mW Max.
- 2.4 Insulation resistance: 1000 MW Min at DC 500V.
- 2.5 Total mating force: 5.0 Kgf Max.
- 2.6 Total unmating force: 2.5 Kgf Min.
- 2.7 Temperature range: -55°C~+105°C

3.Finishes:

- 3.1 contacts:Gold flashed 1u",3u",5u",10U",15u",30u".
- 3.2 Shell: Nickel,tin or Gold plated



6	8.0 Nut	2	Brass	H4.75*8.0	Nickel Plated
5	3B Nut	2	Brass	H4.75*4.75	Nickel Plated
4	Back-shell	1	Cold Rolled Steel	T=0.40mm	Tin Plated
3	Front-shell	1	Cold Rolled Steel	T=0.40mm	Nickel Plated
2	Contact	9~37	Brass	T=0.20mm	Gold Flashed
1	Back Housing	1	PA66	UL 94-V0	Black/Blue/White
	Front Housing	1	P.B.T	UL 94-V0	Black/Blue/White
No.	Part Name	Q'ty	Material	Remarks & Thickness	Finish

PART NO	A±0.25	B±0.25	C±0.25	D±0.25	E±0.25	G±0.25	H±0.20	I±0.20
CR-09S	30.80	25.00	16.30	7.90	17.50	12.60	2.77	2.84
CR-15S	39.20	33.32	24.70	7.90	17.50	12.60	2.77	2.84
CR-25S	53.05	47.04	38.40	7.90	17.50	12.60	2.77	2.84
CR-37S	69.40	63.50	54.80	7.90	17.50	12.60	2.77	2.84

PART NO:	MATERIAL:	 D-SUB CRIMP(F)			
MODEL NO:	FINSH:				
UNIT: mm	SIZE: A4				
TOLERANCE UNSPECIFIED		DR: 段林麗	06/04/01	PART NAME:	
.x	±0.3	CHK:Song	06/04/01	DWG NO:	
.xx	±0.20	APP:Kent	06/04/01	SCALE: 1:1	
.xxx	±0.100			SHEET: 1 of 1	
ANG.	±1°			REV: AO	