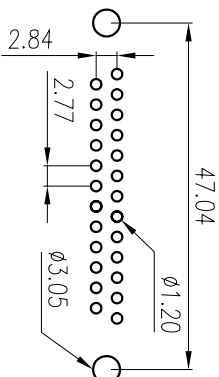
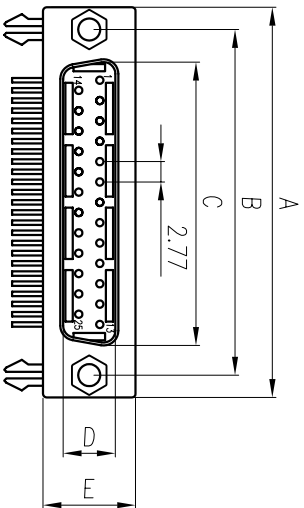


REV.	ECN NO	LOCATIONS	DESCRIPTION	DATE	REVISER	APPD



P.C.B. LAYOUT

Note:

1.Material:

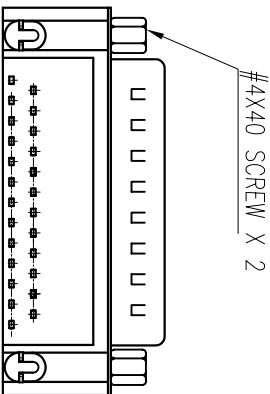
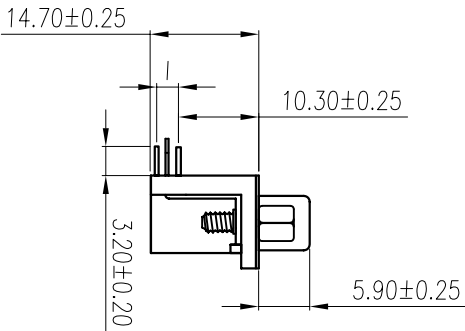
- 1.1 Insulator: P.B.T UL 94-V0 rated.
- 1.2 Contact: Brass,t=0.20mm.
- 1.3 Shell: Cold rolled steel,t=0.40mm.

2.Specification:


- 2.1 Current rating: 1 A Max.
- 2.2 Dielectric withstanding voltage: 500 V(ac) for 1 minute.
- 2.3 Contact resistance: 30 mΩ Max.
- 2.4 Insulation resistance: 1000 MΩ Min at DC 500V.
- 2.5 Temperature range: -55°C~+105°C

3.Finishes:

- 3.1 Contacts:Gold flashed 1U",3U",5U",10U",15U",30U";
or All gold plated.
- 3.2 Shell: Nickel,tin,zinc plated



5	Sckew	2	Brass	4.75*11.80mm	Nickel Plated
4	"Z" type board-lock	2	Brass	T=0.50mm	Tin Plated
3	Front-shell	1	Cold rolled steel	T=0.40mm	Nickel Plated
2	Contact	9~37	Brass	T=0.20mm	Gold Flashed,All Gold
1	Housing	2	P.B.T	UL 94-V0	Black/Blue/White
No.	Name	Q'ty	Material	Remarks & Thickness	Finish

PART NO:	MATERIAL:				
MODEL NO:	FINSH:				
UNIT: mm	SIZE: A4				
TOLERANCE UNSPECIFIED	COLOR:	PART NAME: D-SUB RIGHT ANGLE P.C.B TYPE(M)鍍NUT9.4			
.x ±0.3	DR: 吳曉亮 06/09/08				
.xx ±0.20	CHK: Kevin 06/09/08				
.xxx ±0.100	APP: Kent 06/09/08	DWG NO:	SCALE: 1:1	SHEET: 1 of 1	REV: AO
ANG.					

PART NO	A±0.25	B±0.25	C±0.25	D±0.25	E±0.25	I±0.20
DR-09P	30.80	25.00	16.92	8.30	12.60	2.84
DR-15P	39.20	33.32	25.25	8.30	12.60	2.84
DR-25P	53.05	47.04	38.96	8.30	12.60	2.84
DR-37P	69.40	63.50	55.42	8.30	12.60	2.84