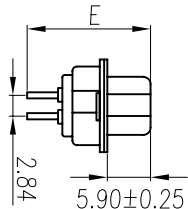
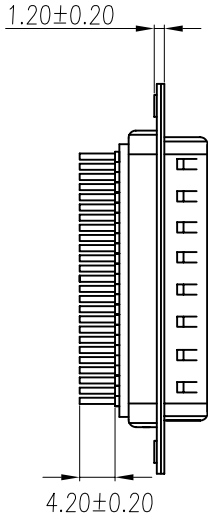
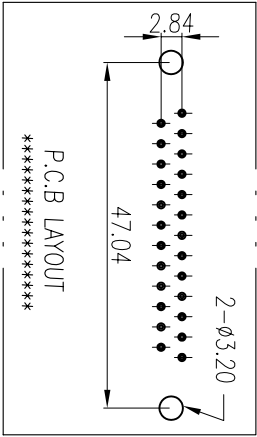
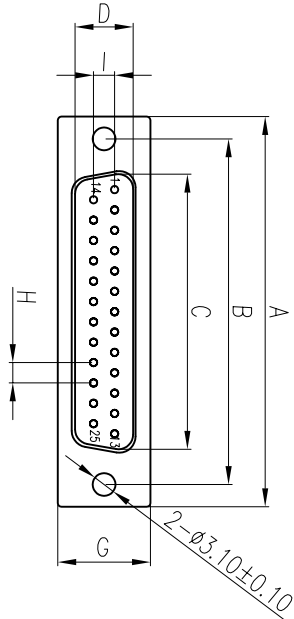


REV.	ECN NO	LOCATIONS	DESCRIPTION	DATE	REVISER	APPD



A	前铆型 (不通孔)	B	后铆型 (通孔)	C	后铆型 (鱼叉)

PART NO	A±0.25	B±0.25	C±0.25	D±0.25	E±0.25	G±0.25	H±0.20	I±0.20
DIP-09P	30.80	25.00	16.92	8.30	16.90	12.60	2.77	2.84
DIP-15P	39.20	33.32	25.25	8.30	16.90	12.60	2.77	2.84
DIP-25P	53.05	47.04	38.96	8.30	16.90	12.60	2.77	2.84
DIP-37P	69.40	63.50	55.42	8.30	16.90	12.60	2.77	2.84

Note:

1.Material:

- 1.1 Insulator: P.B.T UL 94-V0 rated.
- 1.2 Contact: Brass,t=0.20mm.
- 1.3 Shell: Cold rolled steel,t=0.40mm.

2.Specification:

- 2.1 Current rating: 1 A Max.
- 2.2 Dielectric withstanding voltage: 500 V(ac) for 1 minute.
- 2.3 Contact resistance: 30 mΩ Max.
- 2.4 Insulation resistance: 1000 MΩ Min at DC 500V.
- 2.5 Temperature range: -55°C~+105°C

3.Finishes:

- 3.1 Contacts:Gold flashed 1u",3u",5u",10u",15u",30u".
- 3.2 Shell: Nickel,tin or gold plated

8	Hex Screw	2	Brass	H5*10	Tin Plated
7	Boardlock NUT	2	Brass	H4.75*11.5	Nickel Plated
6	8.0 Nut	2	Brass	H4.75*8.0	Nickel Plated
5	3B Nut	2	Brass	H4.75*4.75	Nickel Plated
4	Back-shell	1	Cold Rolled Steel	T=0.40mm	Tin Plated
3	Front-shell	1	Cold Rolled Steel	T=0.40mm	Nickel Plated
2	Contact	9~37	Brass	T=0.20mm	Gold Flashed
1	Housing	1	P.B.T	UL 94-V0	Black/Blue/White
No.	Part Name	Q'ty	Material	Remarks & Thickness	Finish
PART NO:	MATERIAL:				
MODEL NO:	FINSH:				
UNIT: mm	SIZE: A4				
TOLERANCE UNSPECIFIED	DR: 李霞				
.x ±0.3	'06/04/21				
.xx ±0.20	CHK: Kevin				
.xxx ±0.100	'06/04/21				
ANG. ±1°	APP: Kent				
	'06/04/21				
	SCALE: 1:1				
	SHEET: 1 of 1				
	REV: A0				

HSI-CHIN ELECTRONICS CO.,LTD

PART NAME:
D-SUB DIP P.C.B (M)